

FOR SALE



B1403/35 Arncliffe St, Wolli Creek NSW 2205

2 bed 2 bath 1 car

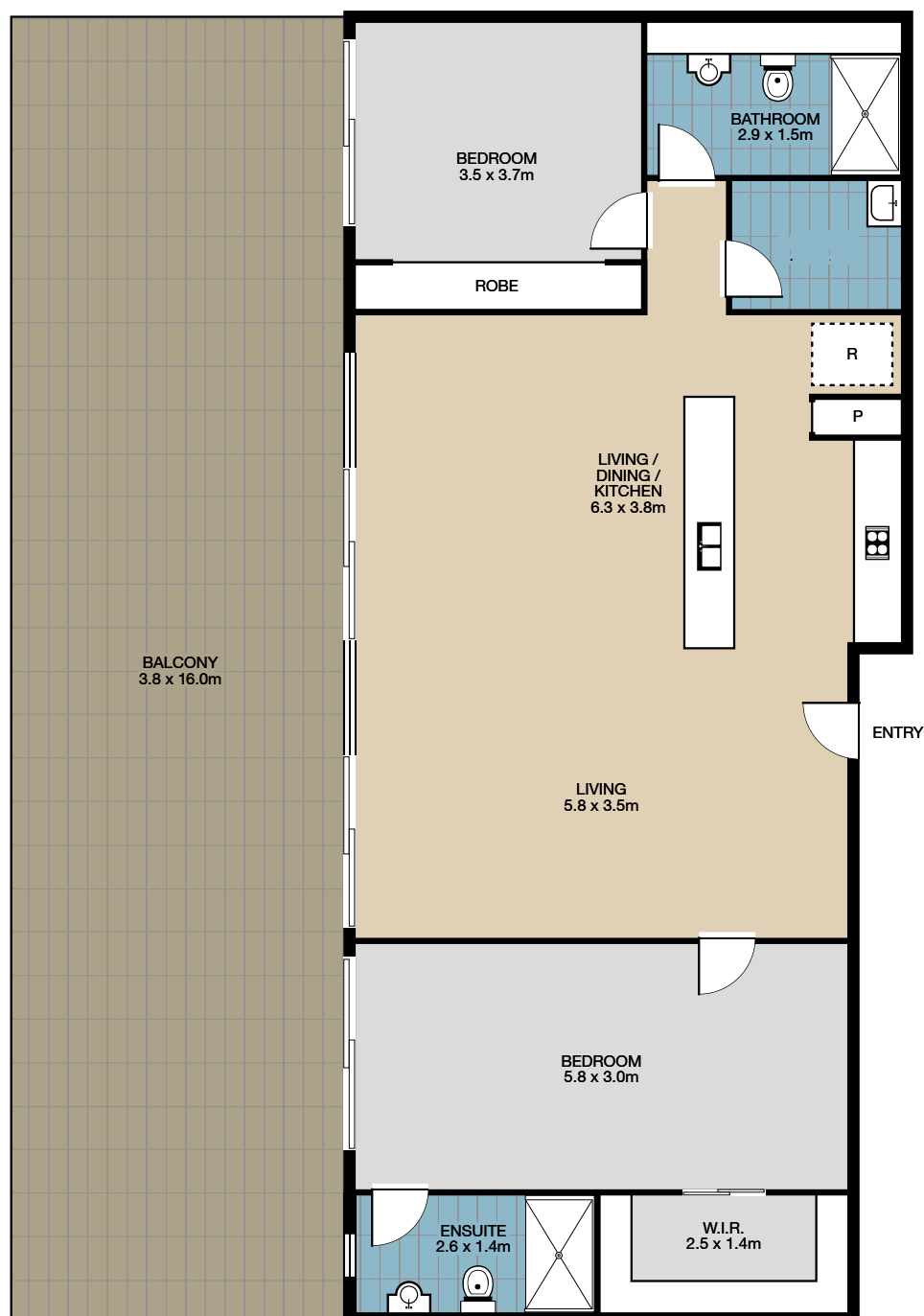
TWO-BEDROOM PENTHOUSE APARTMENT IN WOLLI CREEK

Positioned high on level 14, topfloor and bathed in sunlight with panoramic district views of Cook's river and airport. This penthouse apartment is conveniently located in "Proximity" complex. It's only a short walk to Wolli Creek train station, and right across the road from Woolworths and Dan Murphy.

- Open plan living space with seamless transition through floor to ceiling glass onto the expansive alfresco balcony.
- Two spacious bedrooms including mirrored built-in wardrobes, and balcony access, the main bedroom featuring an ensuite bathroom.
- Security intercom and lift access to secure basement car parking.
- Internal Laundry with dryer.
- Outdoor swimming pool, fully equipped gymnasium and communal BBQ area.



Michael Kurosawa
0411 641 662
mk@infinityproperty.com.au

**Property Specifications:**

Total size : 167m²
 Internal : 153 m² including balcony
 Car space : 14m²

Levies are approximately per quarter:

Strata: \$2,483.96
 Council: \$370
 Water: \$160

Strata Manager:

Strata Plus
 Ph: 8198 8500
 SP: 72442
 LOT : 101

"35 Arncliffe St, Wolli Creek was completed in 2004"