

FOR SALE



**5/320A-338 Liverpool Road, Enfield**

 2  2  1

## MODERN SPLIT-LEVEL 2 BEDROOM APARTMENT

FOR SALE

This split-level two bedroom sun-lit apartment boasts a total area of 85sqm and fresh interiors opening to an undercover alfresco balcony. Offering an expansive layout throughout with great entertaining options and light-filled spacious interiors.

- Open plan living and dining leading to large undercover alfresco balcony
- Modern stone kitchen with stainless steel appliances and gas cooking
- Two spacious bedrooms, both feature mirrored built in wardrobes with balcony access. Main bedroom with ensuite bathroom.
- Close proximity to CBD transport, shopping village, local schools & acres of Henley Park



**Michael Kurosawa**

0411 641 662  
mk@infinityproperty.com.au

**Jimmy Shi**

0422 090 807  
jimmy@infinityproperty.com.au

**Infinity**  
PROPERTY AGENTS

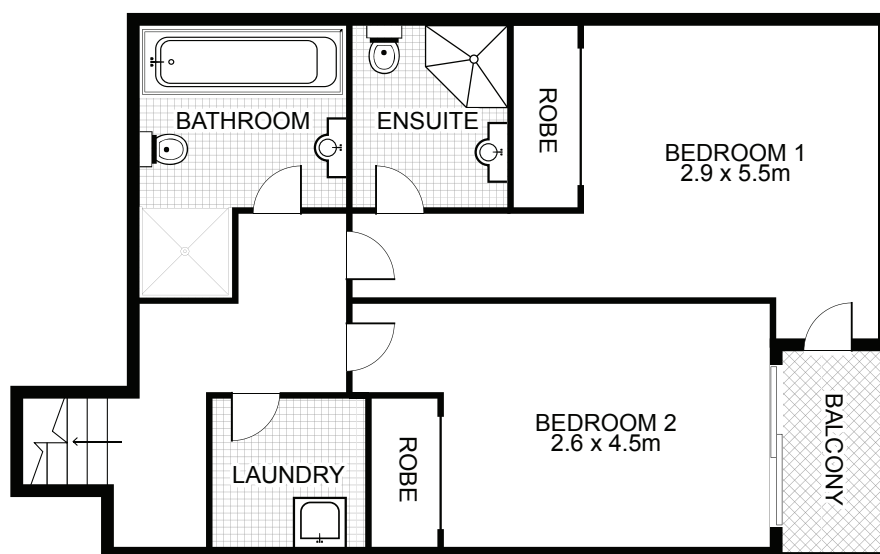
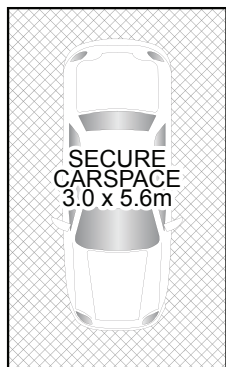
Call us:

**9699 9179**

[www.infinityproperty.com.au](http://www.infinityproperty.com.au)



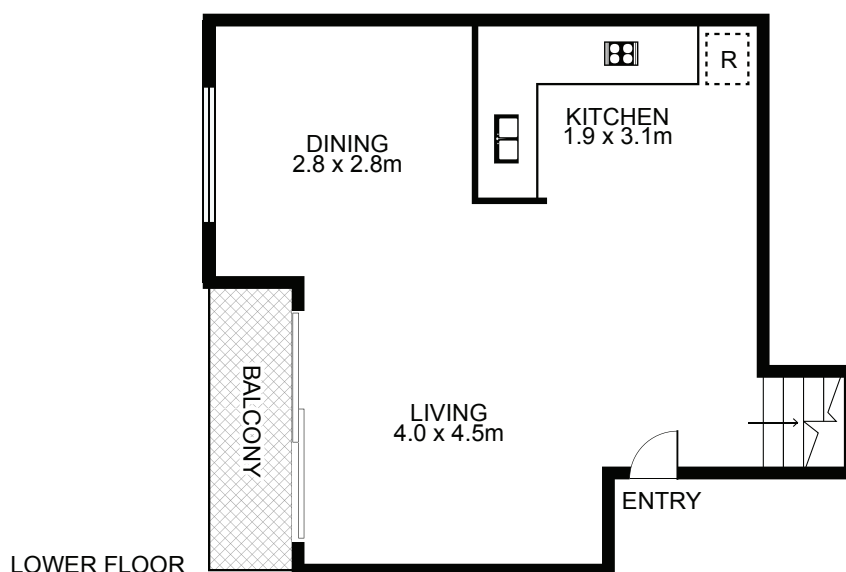
# 5/320a-338 Liverpool Road , Enfield



UPPER FLOOR



NORTH



LOWER FLOOR

## Property Specifications:

Total size: 102m<sup>2</sup>  
Including internal 85m<sup>2</sup>  
+ car space/storage: 17m<sup>2</sup>

## Levies are approximately per quarter:

Strata: \$576  
Council: \$290  
Water: \$178

## Strata Manager:

Conti Strata  
Ph: 9716 8686

The complex was built in 2004