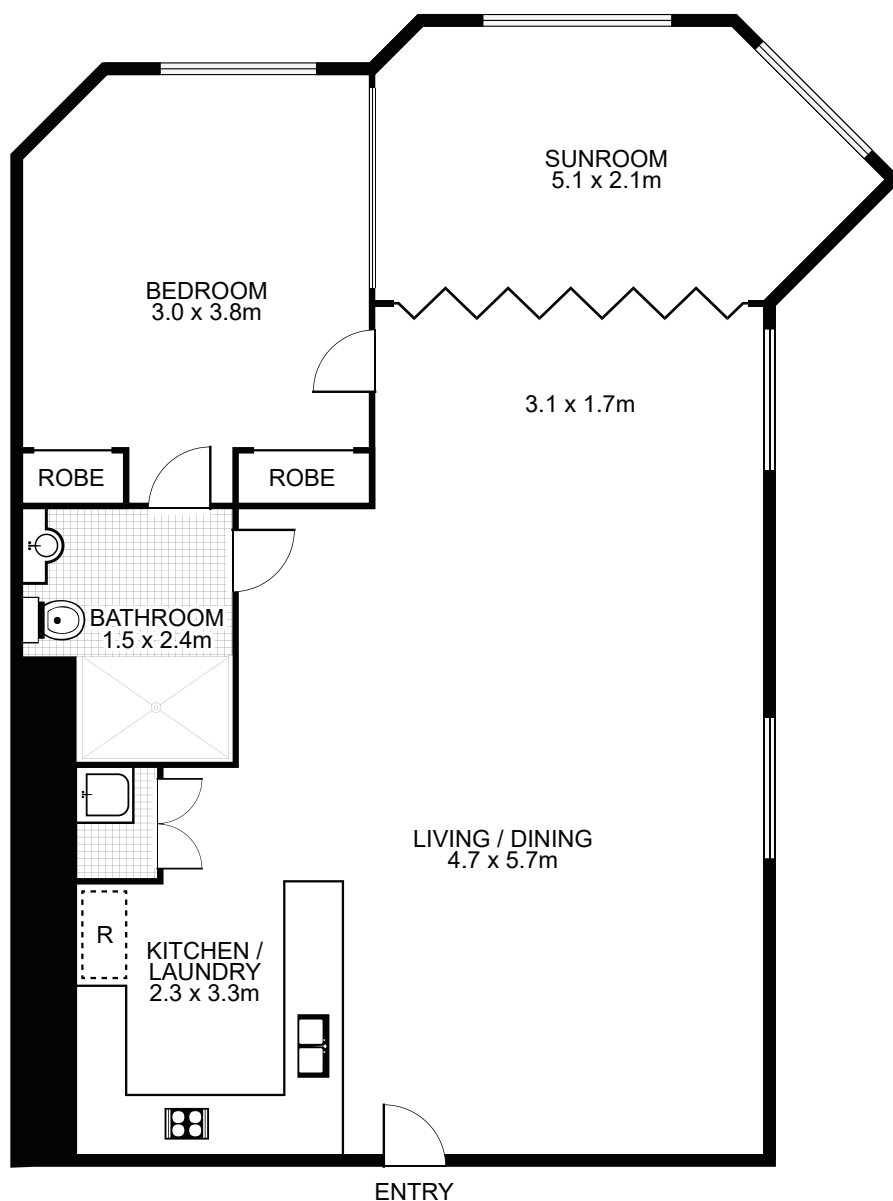
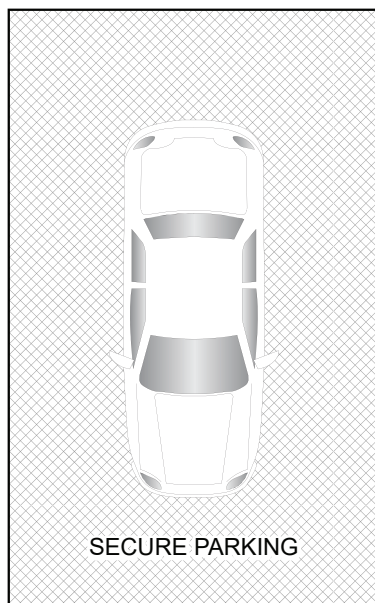


13/361–363 Military Road, Mosman



Property Specifications:

Total Size: 80m²

- 63sqm living area including sunroom (Level 1)
- 15sqm car space + storage cage (Basement Level 3)

"361-363 MILITARY ROAD" was completed in 2016

Levies are approximately per quarter:

Strata: \$1,874
Council: \$364
Water: \$177

Strata Manager

Executive Strata
Ph: 1300 984 186