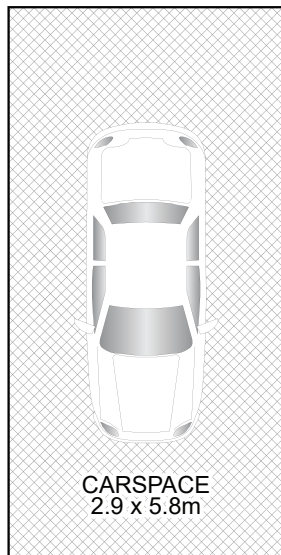
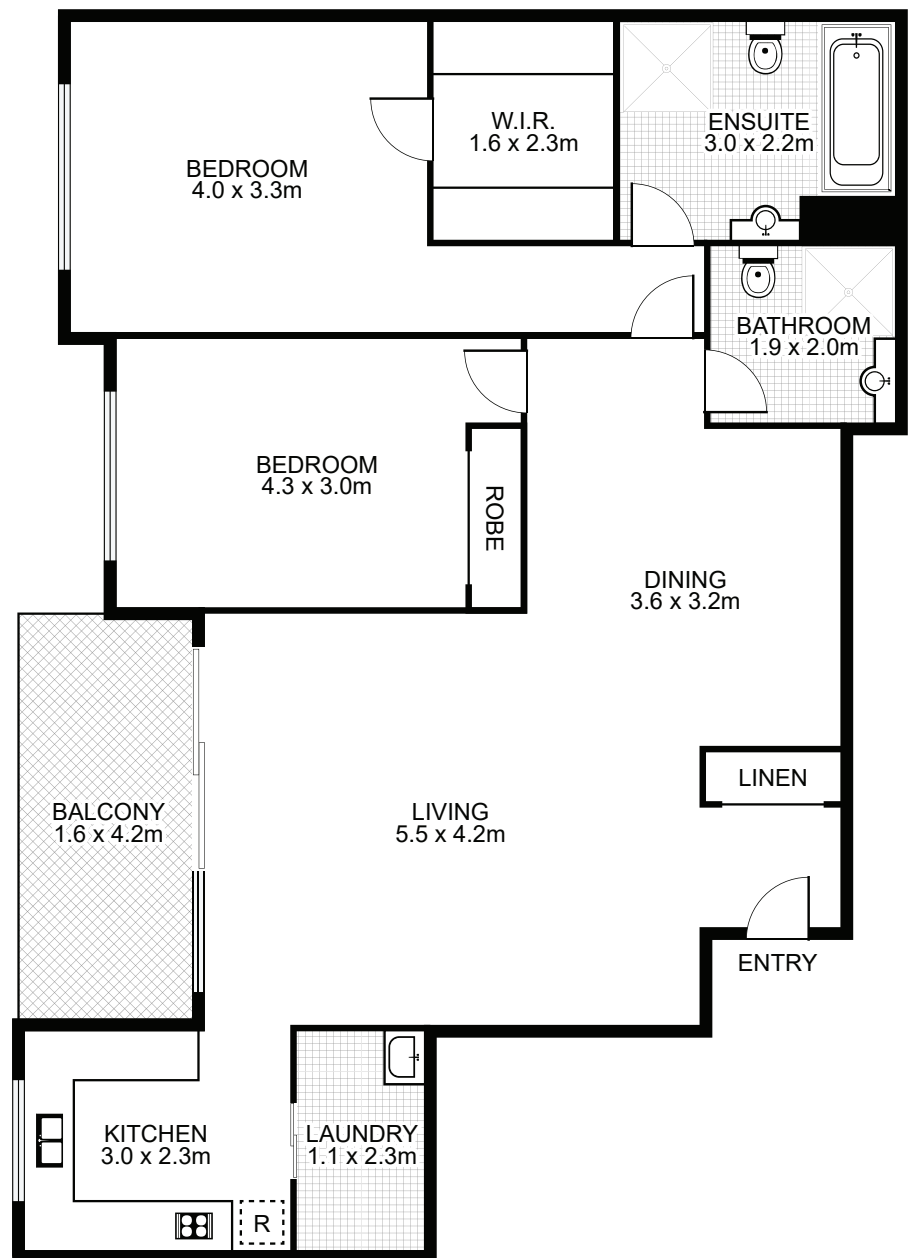


392/83 Dalmeny Avenue, Rosebery



NORTH



Property Specifications:

- Total Size: 111m²
- Internal area including balcony: 95m² (Block L, Level 2)
- Car Space: (Block M, Level 2)

"Kimberley Estate" was built in 1996

Levies are approximately per quarter:

- Strata: \$1,539
- Council: \$296
- Water: \$152

Strata Manager

Whelan Property Group
Ph: 9219 4111