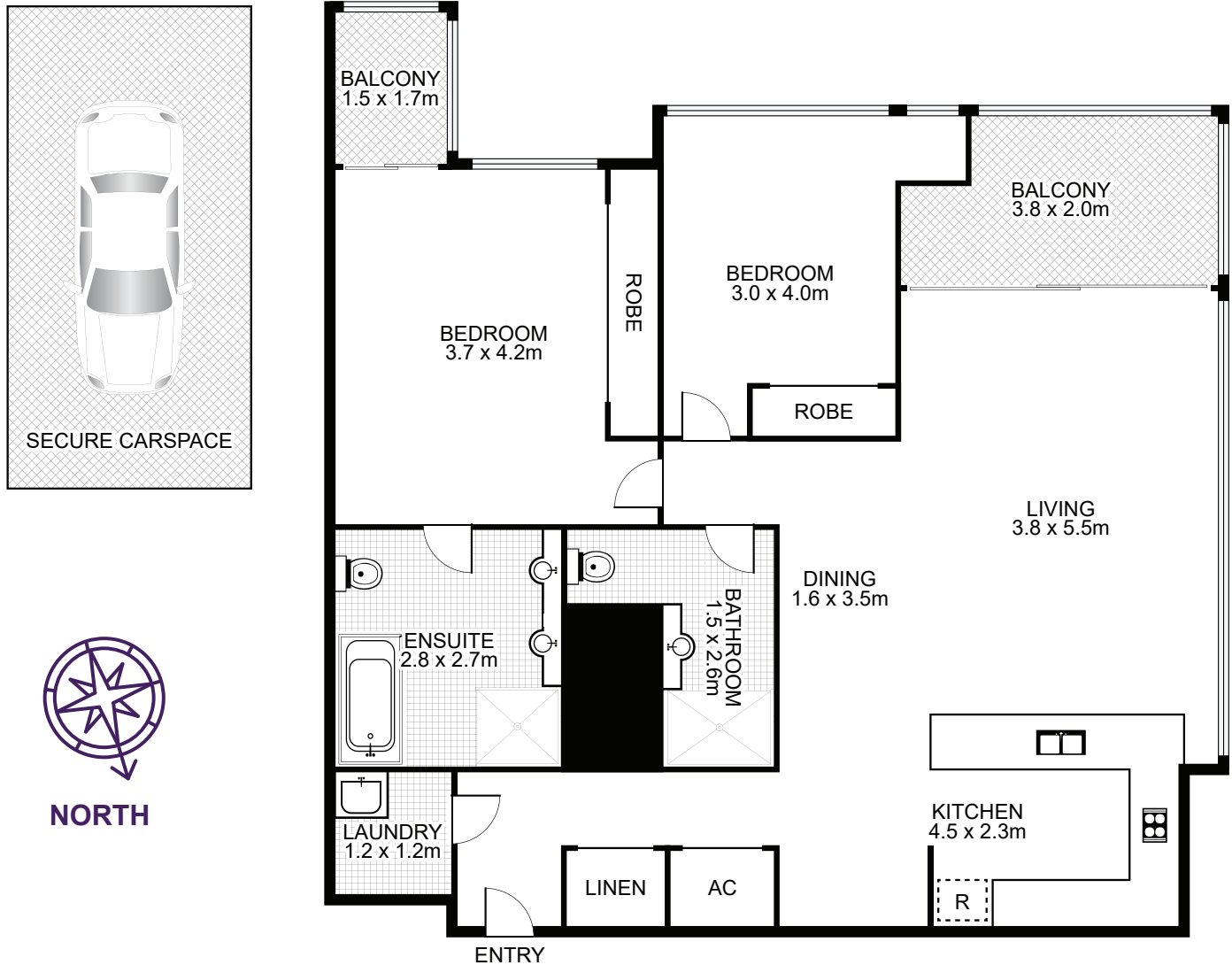


5503/91 Liverpool Street, Sydney



Property Specifications:

Total Size: 116m²

- Internal space including balcony: 99m² (Level 55)
- Car Space: 14m² + Storage: 3m² (Level 5)

"World Tower" was registered in 2004

Levies are approximately per quarter:

Strata: \$2,314
Council: \$293
Water: \$188

Strata Manager

Change Strata Management
Ph: 8203 3111