

FOR SALE



610/88 Vista Street, Mosman

FOR SALE



SUPERB ONE-BEDROOM IN THE HUB OF MOSMAN

Live a lifestyle of ease and accessibility in this contemporary one-bedroom apartment located in the Nuova Complex in Mosman. Positioned on the 6th floor, this is a superb entry to an exclusive blue-ribbon village locale that will appeal to first home buyers, those seeking a city pad and investors. Transport options to the CBD at Spit Junction are just moments away. Only footsteps to Mosman Village's boutique shops and cafes and close to Balmoral Beach and bayside retreats.

- Combined open plan living/dining areas
- Sleek Caesar stone bench top kitchen with gas cooking and SMEG appliances
- Double-size bedroom with built-in wardrobe
- Handy study nook
- Transport to CBD at Spit Junction is just moments away



Michael Kurosawa

0411 641 662

mk@infinityproperty.com.au

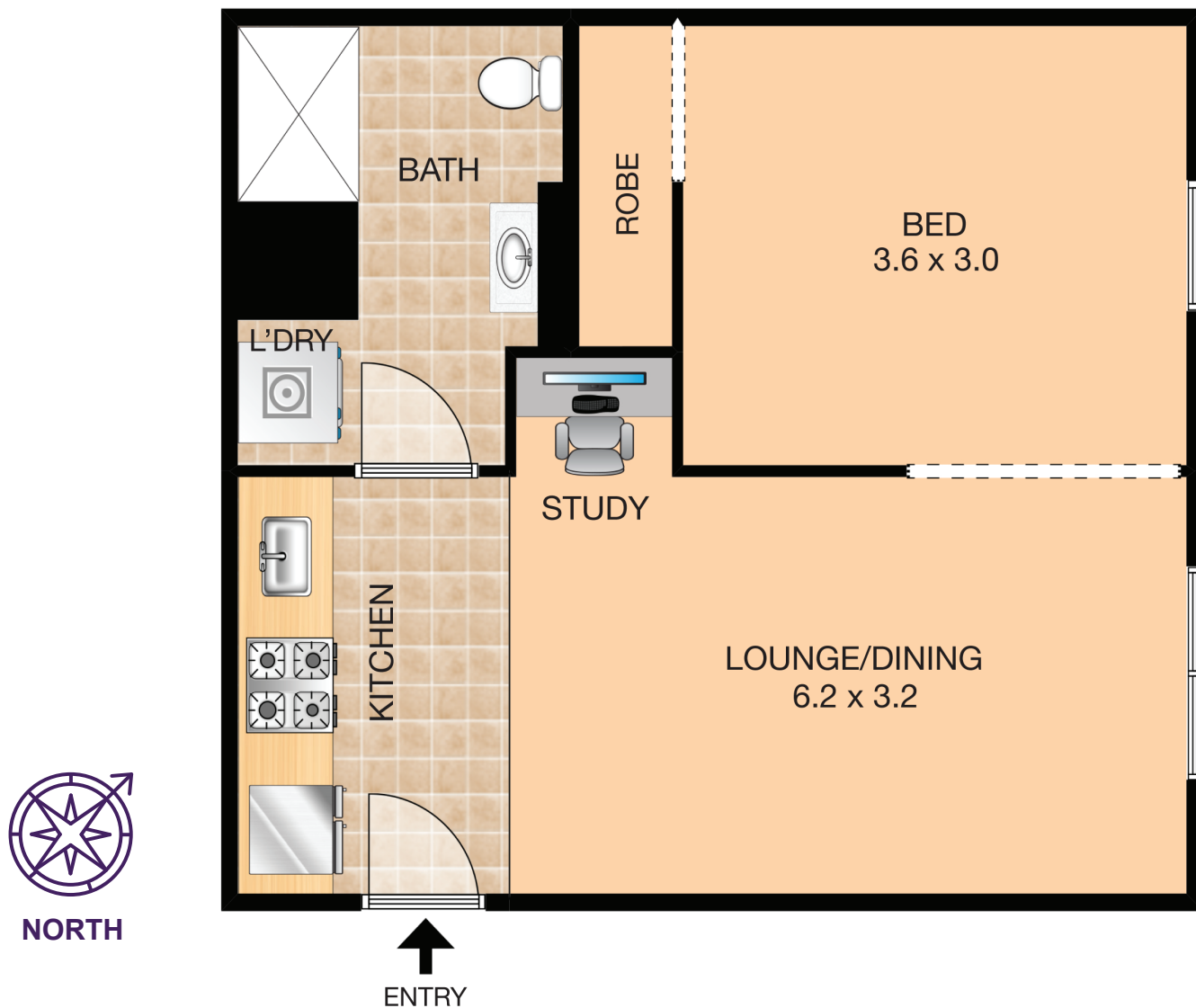
Infinity
PROPERTY AGENTS

Call us:

9699 9179

www.infinityproperty.com.au

610/88 Vista Street, Mosman



Property Specifications:

Total Size: 42m2
- Internal living area 42m2 (Level 6)

Levies are approximately per quarter:

Strata: \$1,761
Council: \$299
Water: \$144

Strata Manager

Wellman Strata
Ph: 8065 6575

"Nuova" complex was completed in 2004