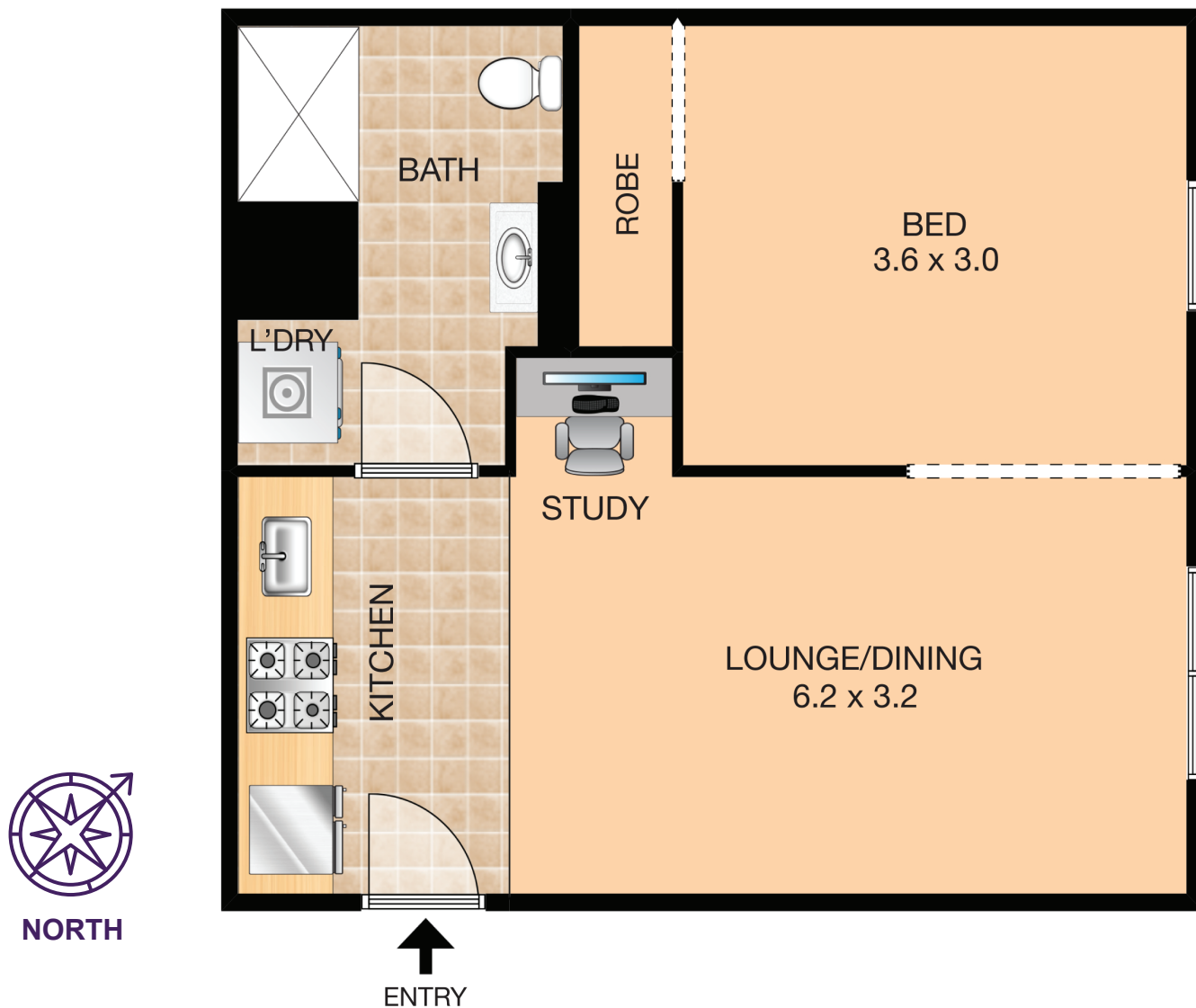


610/88 Vista Street, Mosman



Property Specifications:

Total Size: 42m2
- Internal living area 42m2 (Level 6)

Levies are approximately per quarter:

Strata: \$1,761
Council: \$299
Water: \$144

Strata Manager

Wellman Strata
Ph: 8065 6575

"Nuova" complex was completed in 2004