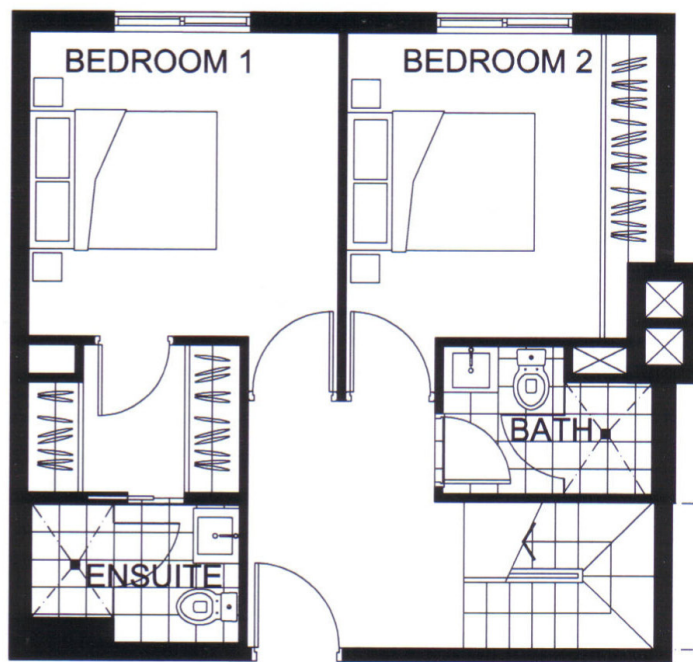


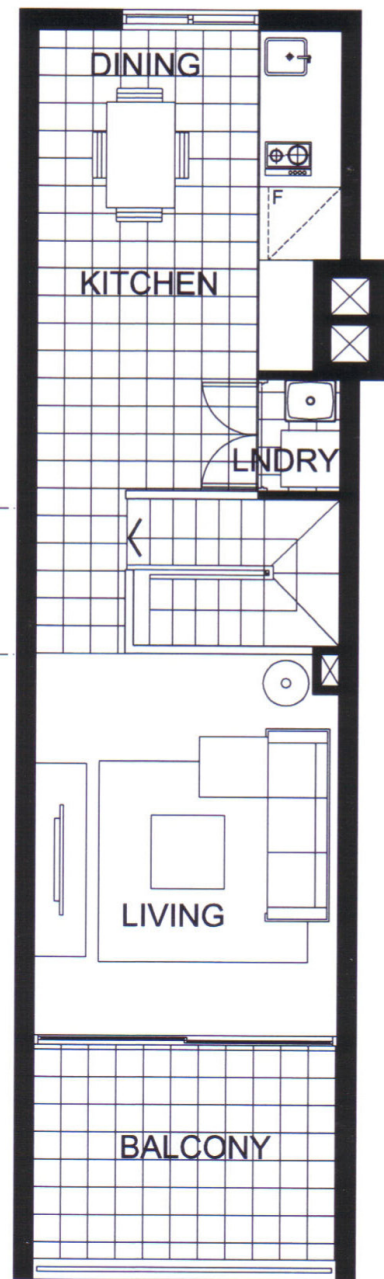
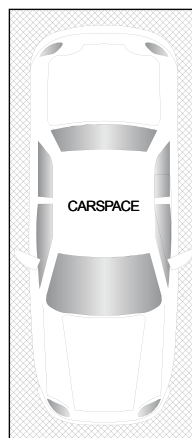
# 312/19-21 Grosvenor Street, Neutral Bay



LEVEL 3



NORTH



LEVEL 4

## Property Specifications:

- Total Size: 105m<sup>2</sup>
- Level 3: 45m<sup>2</sup> +
  - Level 4: 44m<sup>2</sup> including balcony +
  - Parking: 14m<sup>2</sup> + Storage: 2m<sup>2</sup>

## Levies are approximately per quarter:

Strata: \$1,931  
Council: \$216  
Water: \$168

## Strata Manager

Whellman Strata Management  
Ph: 8065 6575

"Lucca" building was completed in 2009