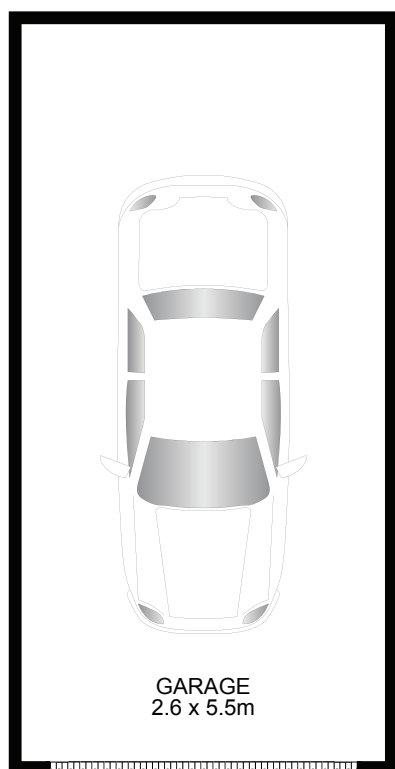
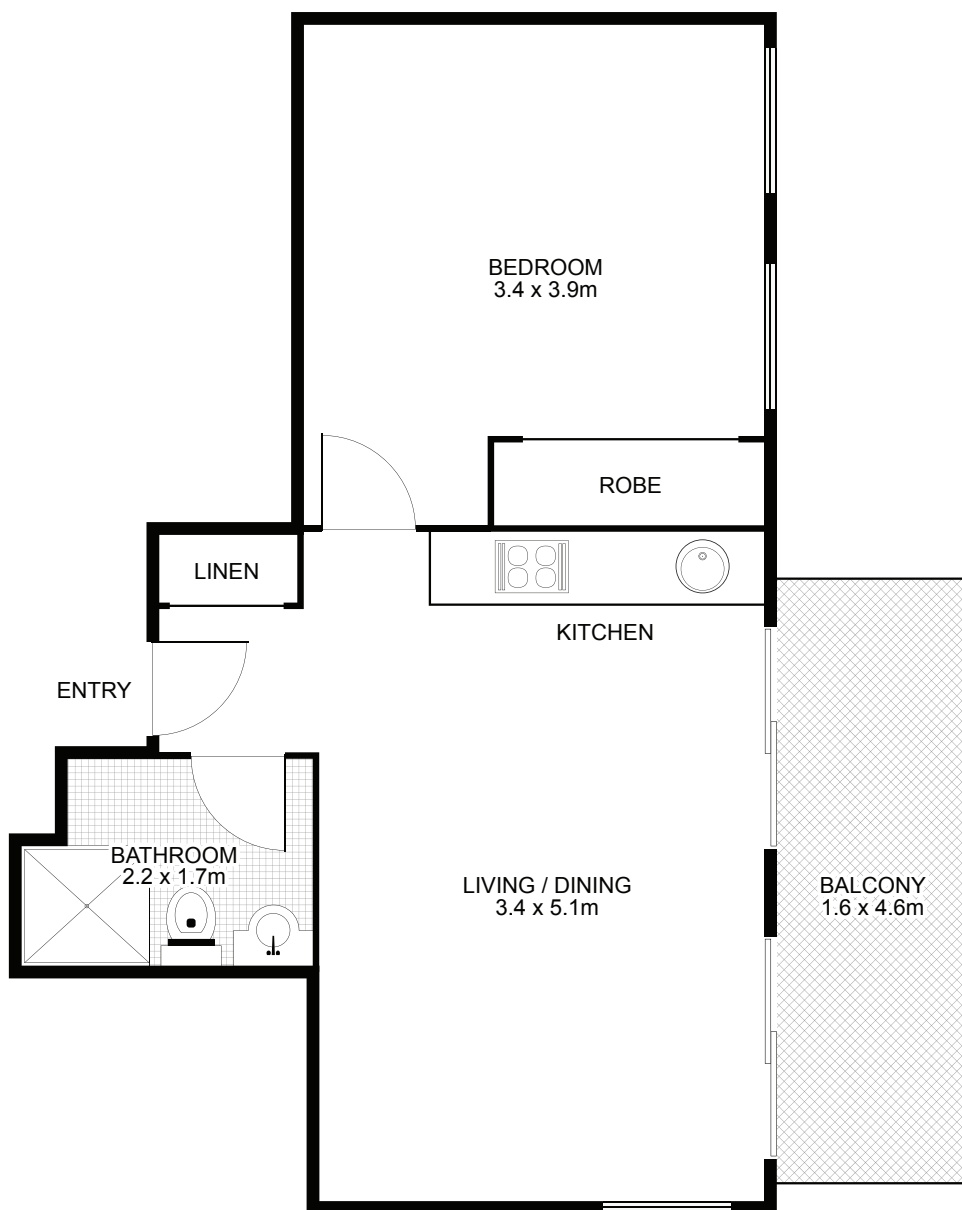


604/433 Alfred Street North, Neutral Bay



NORTH



Property Specifications:

Total Size: 57 m²

- 43m² living including balcony (Level 5)

- 14m² car space (Level 4)

Levies are approximately per quarter:

Strata: \$1,134

Council: \$259

Water: \$185

Strata Manager

Jamesons Strata Management

Ph: 8969 3300

"Eastview" was registered in 1996