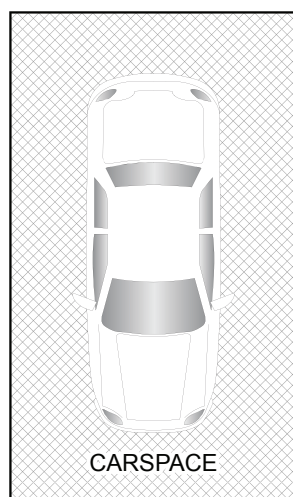
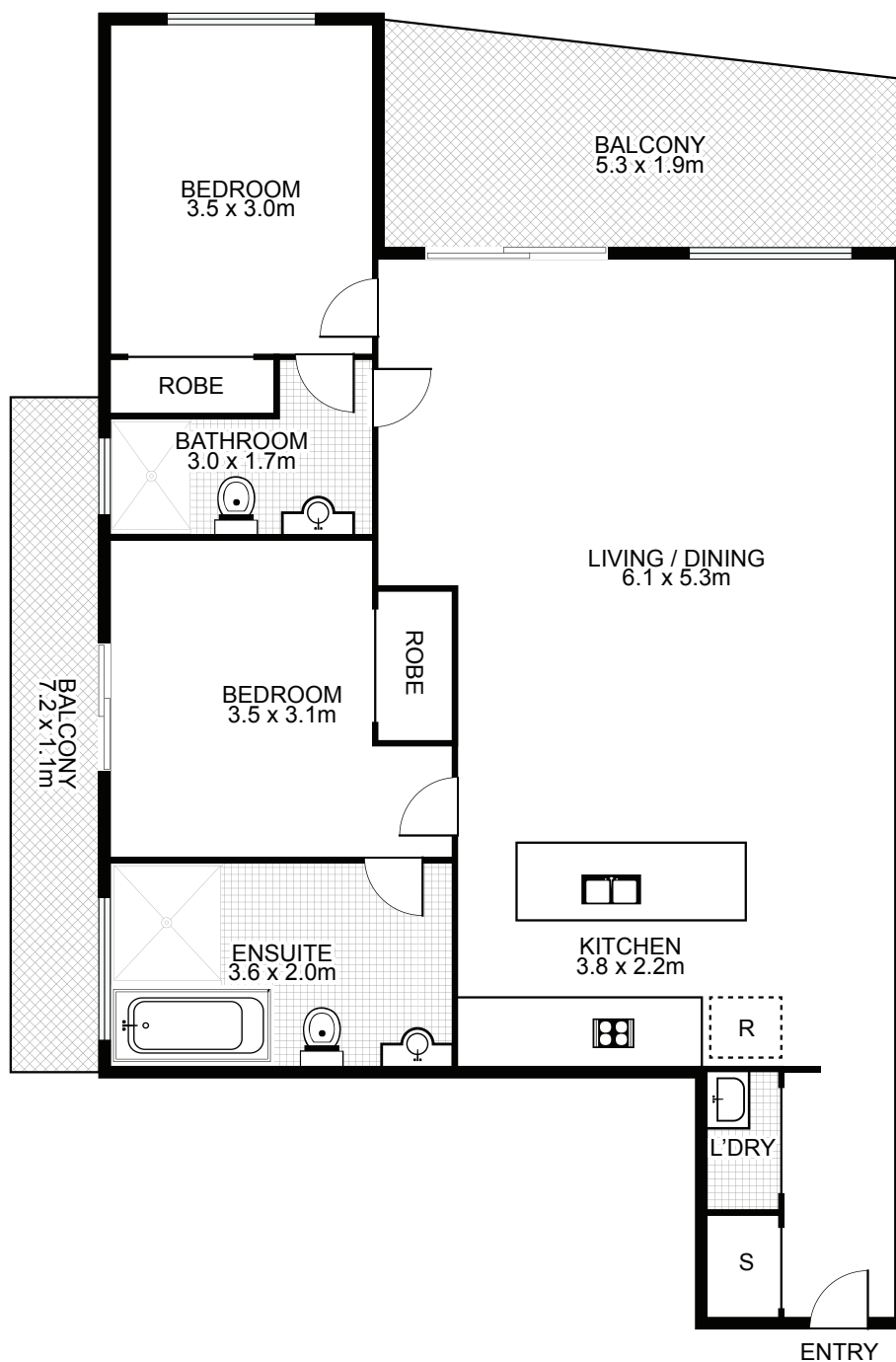


27/16-20 Grosvenor Street, Croydon



NORTH



Property Specifications:

- Total Size: 118m²
- 101m² including 2x balconies (Level 3)
- 17m² car space (Basement Level 2)

Levies are approximately per quarter:

- Strata: \$772
- Council: \$323
- Water: \$178

Strata Manager

Proactive Strata Services
Ph: 9807 9255

"Aiden" was registered in 2008