




FOR SALE



2403/8 Eve St, Erskineville

 1 bed  1 bath  1 car

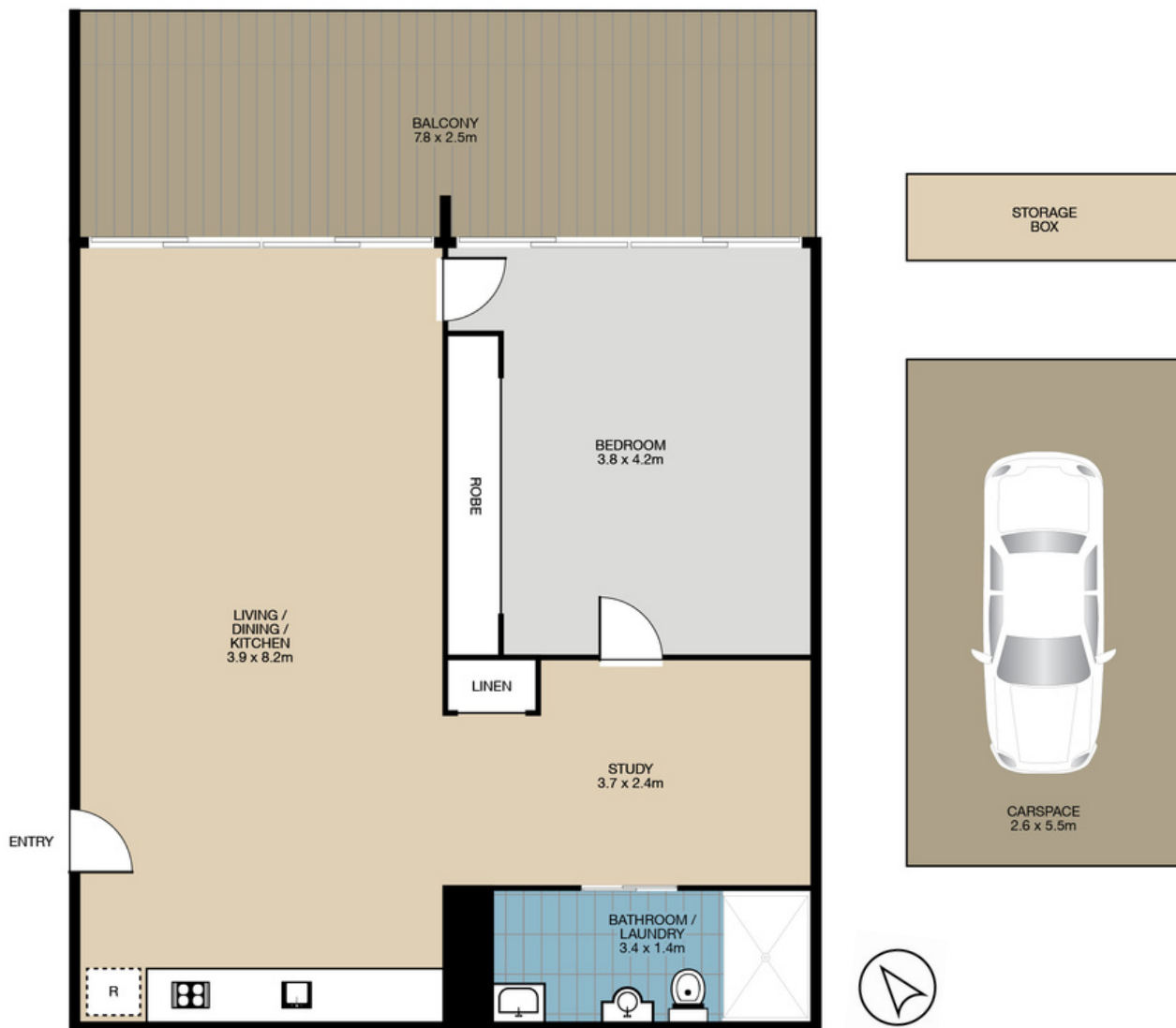
MODERN ONE-BEDROOM PLUS STUDY APARTMENT & DOUBLE STORAGE

This spacious one-bedroom apartment with plenty of natural light is located in Erskineville's award winning building, the 'Motto' development. Only a stones throw away from boutique cafes, shops, local parks and restaurants. Here's your opportunity to move in to one of the best residences in Erskineville.

- Generous open plan living & dining room with balcony access
- Double lockable storage in basement & Secured car space
- Carspace close to the lift for access
- Large bedroom with balcony access
- Large, combined laundry/bathroom with dryer
- Walking distance from Erskineville & St Peters Train station



Michael Kurosawa
0411 641 662
mk@infinityproperty.com.au



Property Specifications:

Total: 99m²
 Internal: 81m² including balcony
 Carspace: 18m²

Levies are approximately per quarter:

Strata: \$1425
 Council: \$250
 Water: \$170

Strata Manager:

Dynamic Property
 Services
 Ph: 02 9267 6334
 Strata Plan: SP 76137

‘Motto’ was registered in 2006