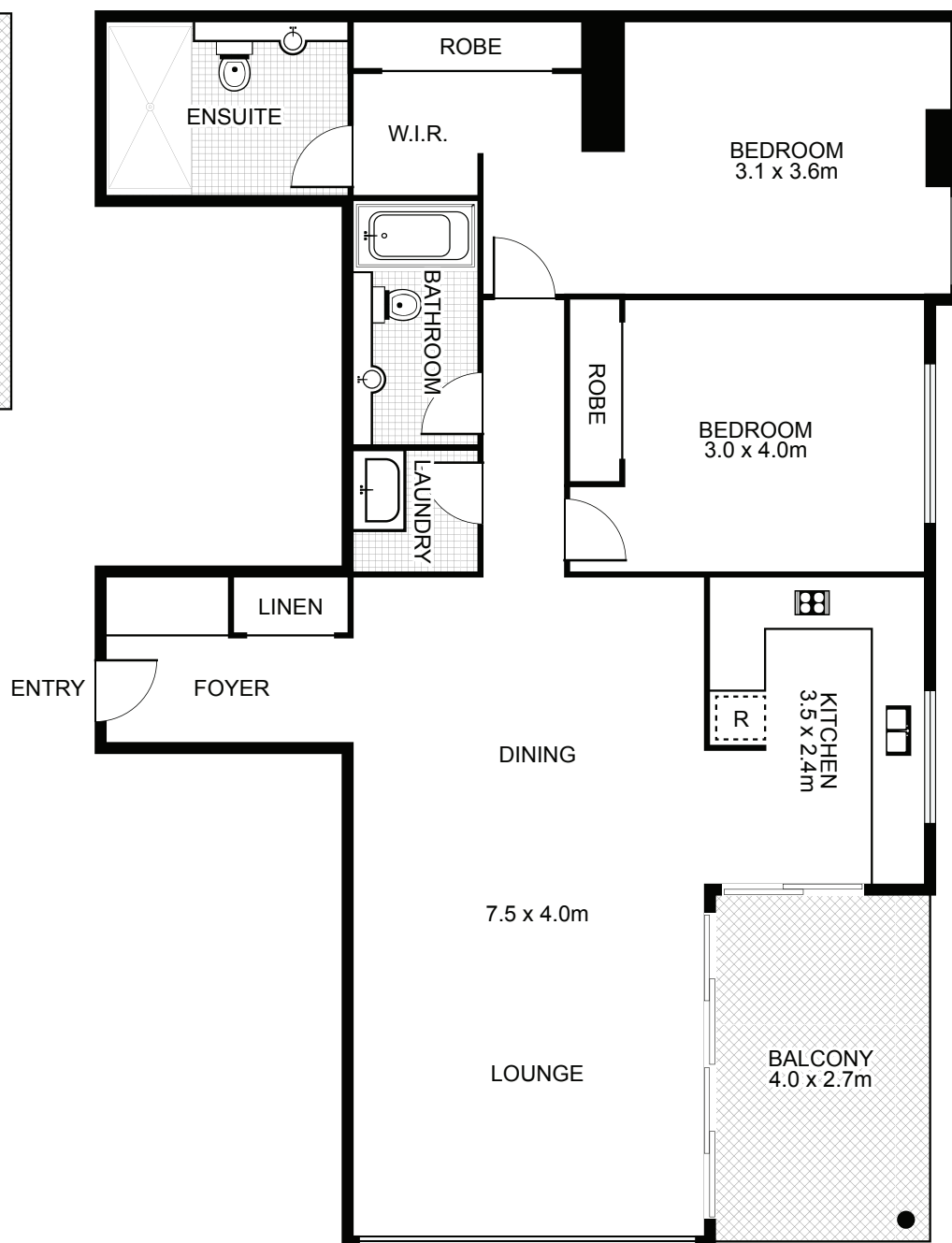
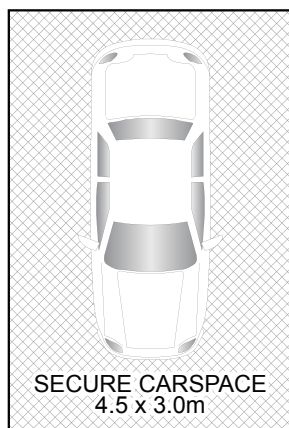


614/1 Bruce Bennetts Place, Maroubra



NORTH

Property Specifications:

Total Size: 121m²

- Internal: 104m² including balcony (Level 6)

- Car space: 17m² (Basement Level 2)

-

"Panorama" was registered in 2005

Levies are approximately per quarter:

Strata: \$1,648

Council: \$365

Water: \$185

Strata Manager

Strata Plus

Ph: 8198 8500