

FOR SALE



2502/2-14 Eve Street, Erskineville

HUGE TOP LEVEL ONE-BEDROOM APARTMENT IN MOTTO



FOR SALE

This beautifully presented one-bedroom, 5th floor apartment is located in Erskineville's fashionably designed 'Motto' development. This unit is an ideal investment or stylish home, located on level 5 in this award-winning building, designed by Allen Jack & Cottier. Perfectly located close to the vibrant cafes and restaurants of King Street and Erskineville Village with Newtown and Erskineville stations at your disposal with easily available bus facilities.

- Generous open plan living & dining room with entertainers balcony access
- Sleek white kitchen with Caesar stone benches, mirror splash backs, Gas cook top, Omega stainless steel appliances
- Large bedroom with balcony access
- Under cover secure parking & beautiful outdoor communal pool and green, grassy gardens



Michael Kurosawa
0411 641 662

mk@infinityproperty.com.au

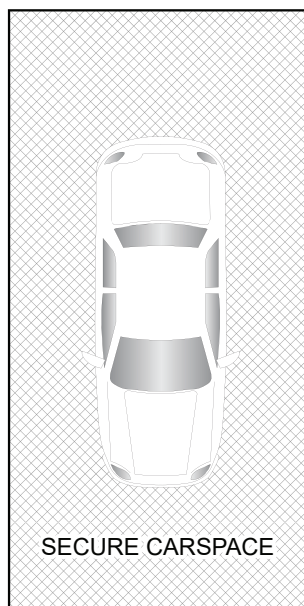
Infinity
PROPERTY AGENTS

Call us:

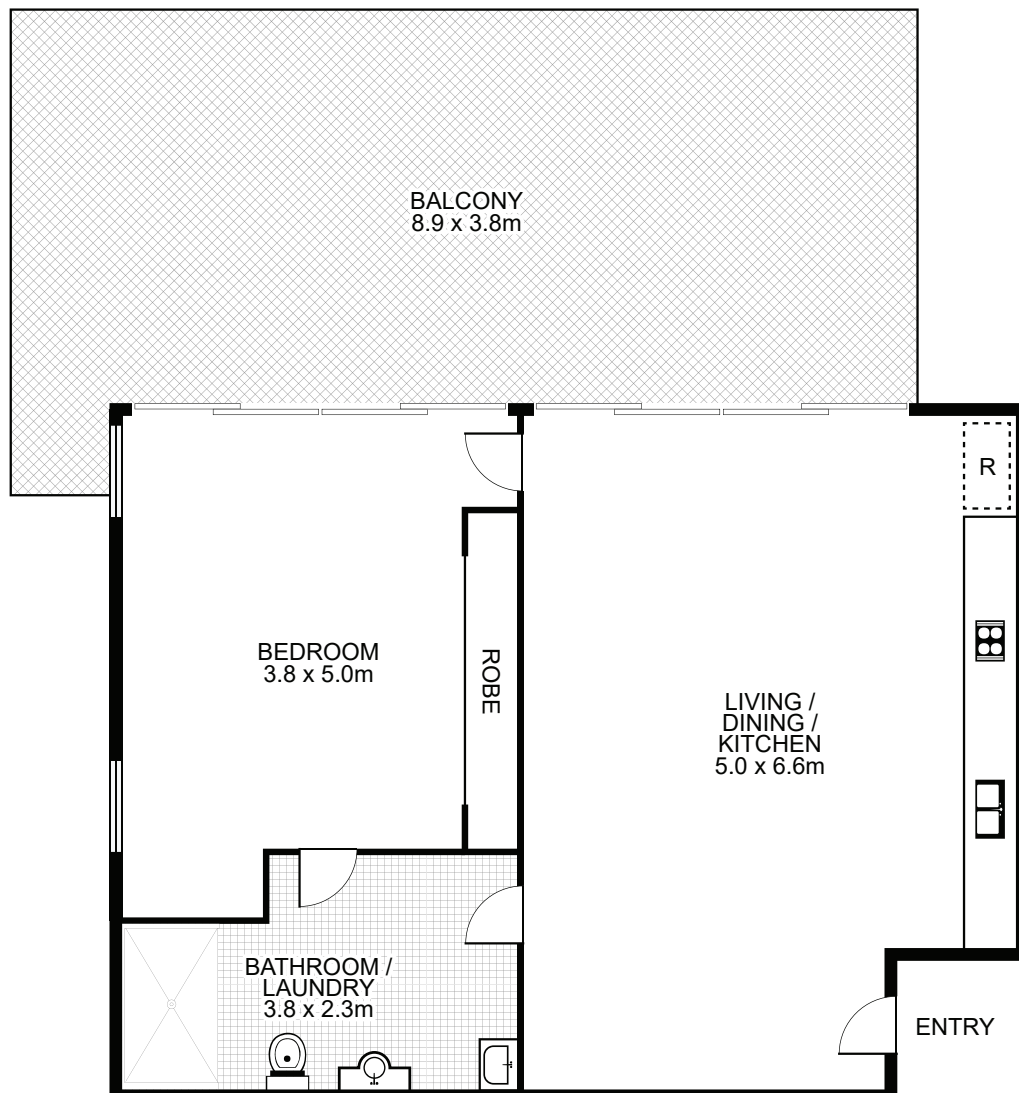
9699 9179

www.infinityproperty.com.au

2502/2 Eve Street, Erskineville



NORTH



Property Specifications:

- Total Size: 108m²
- 93m² living area including balcony (Level 5)
- 15m² car space (Basement Level)

"Motto" was registered in 2006

Levies are approximately per quarter:

- Strata: \$1,071
- Council: \$239
- Water: \$183

Strata Manager

Strata Plus
Ph: 9319 1899