

FOR SALE



510/88 Vista Street, Mosman NSW 2088

1 bed 1 bath

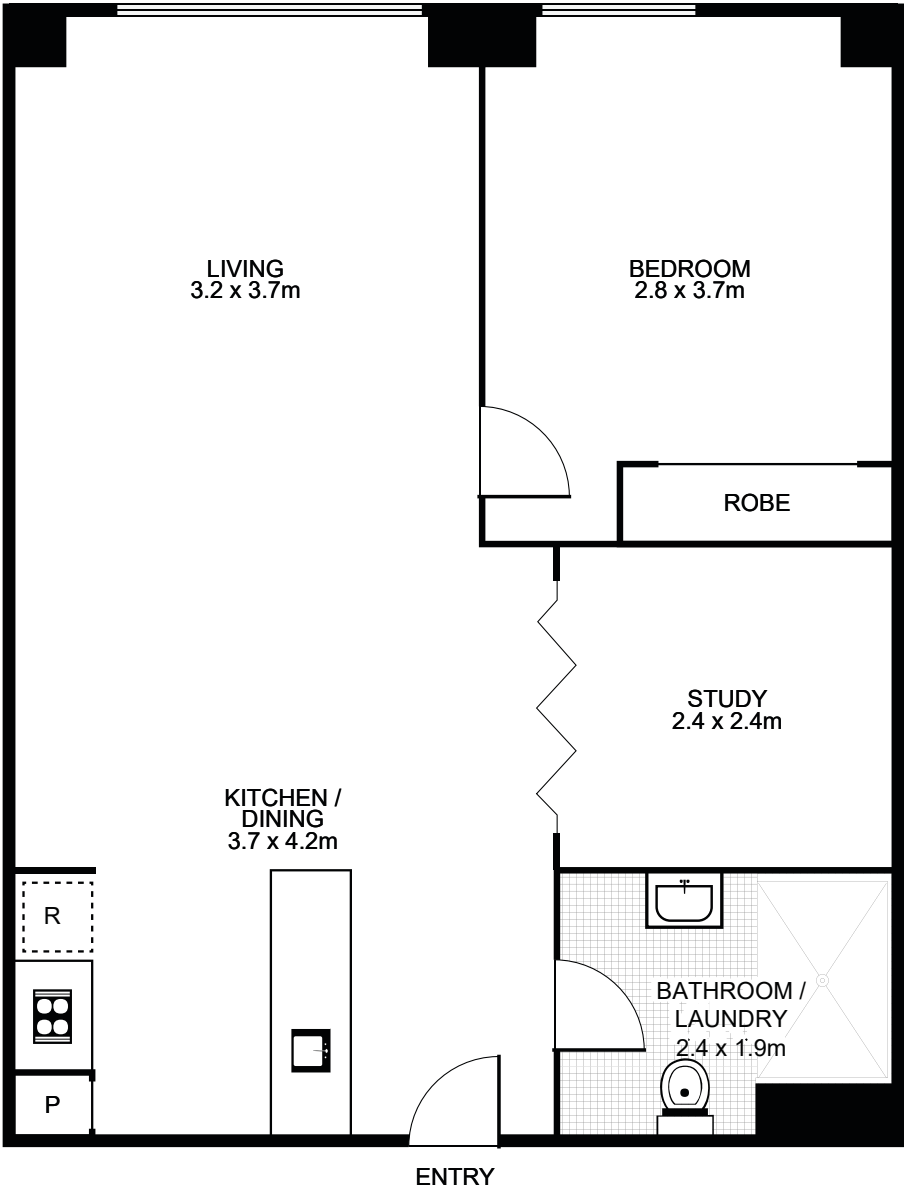
PET FRIENDLY ONE-BEDROOM PLUS STUDY

Live a lifestyle of ease and accessibility in this contemporary and spacious one-bedroom apartment located in the Nuova Complex in Mosman. This is a superb entry to an exclusive blue-ribbon village locale that will appeal to first home buyers, those seeking a city pad and investors.

- Brand new carpet just been laid
- Freshly painted entire unit
- Functional layout with open plan design
- Sleek Caesar stone bench top kitchen with gas cooking, island bench and European appliances including dishwasher
- Large, enclosed study area – 6m² approx.



Michael Kurosawa
0411 641 662
mk@infinityproperty.com.au



Property Specifications:	Levies are approximately per quarter:	Strata Manager:
Total Size: 50m ²	Strata:\$2,000 Council:\$395 Water:\$150	Wellman Strata Ph: 8065 6575 SP: 71822 LOT : 73
"The Nuova Complex was completed in 2004"		