

FOR SALE



502/1 Brightwell Lane, Erskineville, NSW 2043

1 bed

1 bath

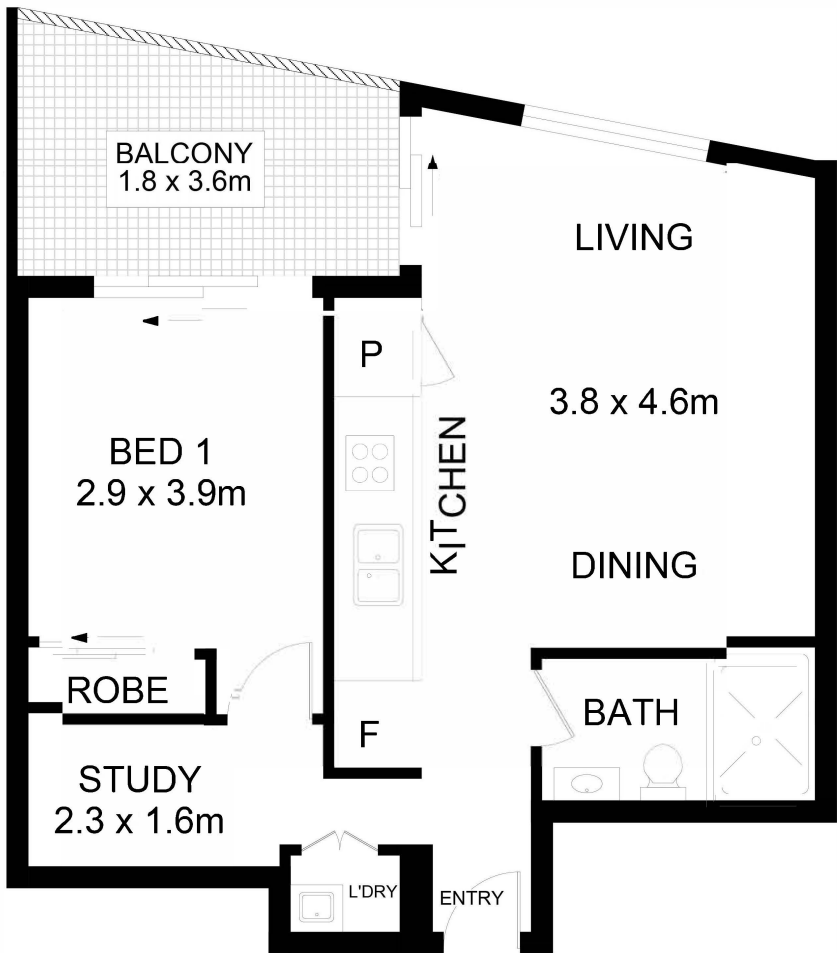
Modern East Facing Apartment with Study Room

This prestigious east-facing one-bedroom plus study room apartment is perfectly positioned at the heart of Erskineville. Only a stroll to Erskineville shopping village, including the new Woolworth Metro, fresh food market, coffee shops, and restaurants. Offering spacious open plan living, modern bathroom, gourmet gas kitchen, and good sized bedroom with sizable balcony.

- Spacious Bedroom with Built-in Wardrobe
- Fully tiled bathroom with frameless shower, recessed shelving
- Open plan living flows both from the Living room and bedroom to the balcony
- Split air conditioning system and Internal laundry & clothes dryer
- 3.7m2 Study room perfect for working from home or study- Security building with video intercom
- BBQ Area & Internal Garden



Michael Kurosawa
0411 641 662
mk@infinityproperty.com.au



502/1 Brightwell Lane, Erskineville

DISCLAIMER: No liability for the accuracy of details contained within our floor plans. All plans are drawn and also checked to the best of our ability, however information contained in our floor plans such as area calculations are approximate, and have not been surveyed or drawn to scale. Our floor plans are for representational purposes only and should be used as such. Do not attempt to refer to our floor plans for structural or detailed information.

Property Specifications:	Levies are approximately per quarter:	Strata Manager:
Total Size:58m ² 58m ² (balcony inclusive)	Strata: \$1,100 Council: \$290 Water: \$180	Whelan Property Group Ph : 9219 4111 SP : 95273 LOT: 61
“1 Brightwell Lane” was registered in 2017		