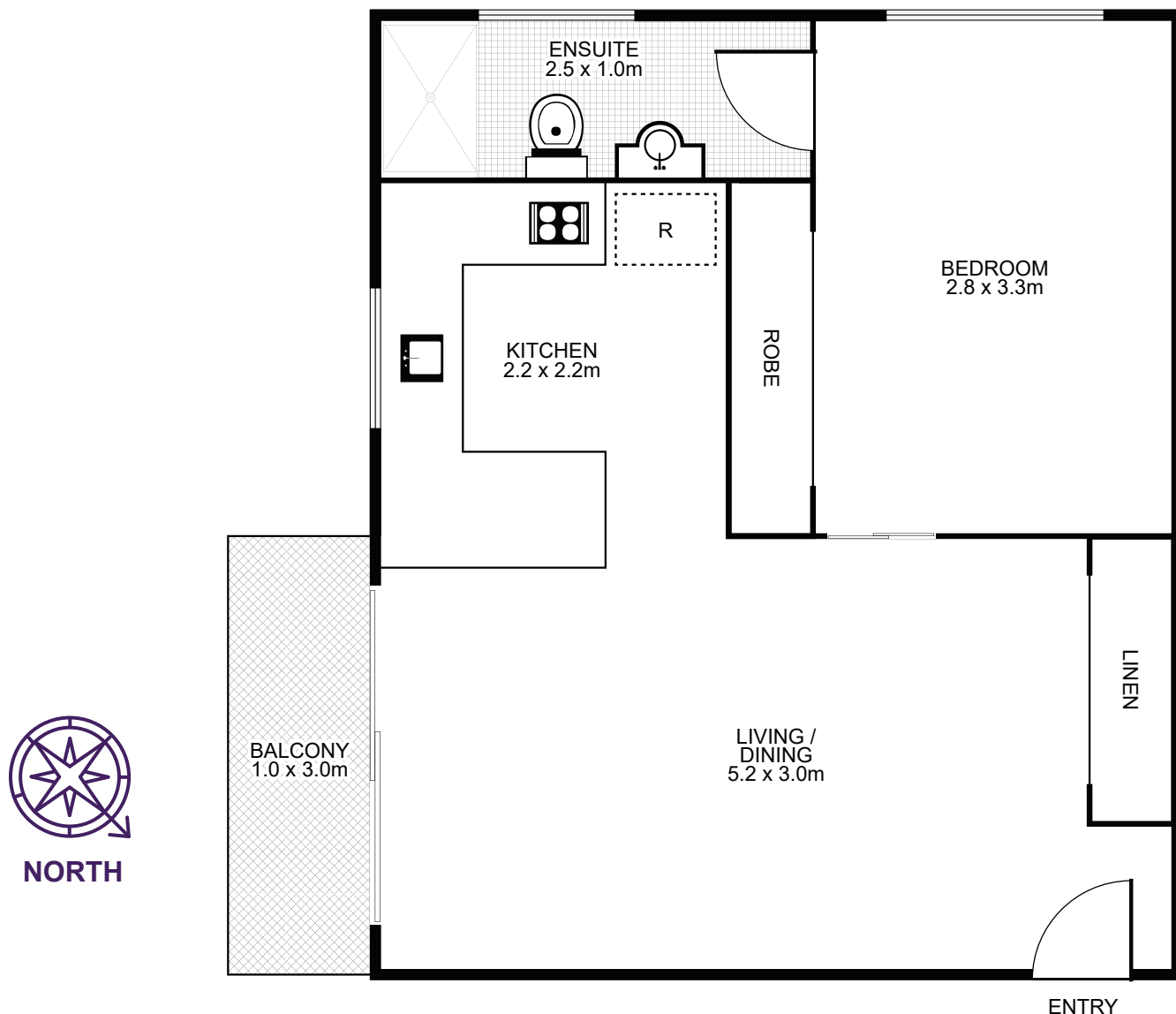


7/8 Avona Avenue, Glebe



Property Specifications:

Total Size: 34m²

- Internal living including balcony 34m²
(First Floor)

"8 Avona Avenue" was registered in 1977

Levies are approximately per quarter:

Strata: \$680

Council: \$273

Water: \$146

Strata Manager

Strata Choice

Ph: 1300 379 587

Strata Plan 11656