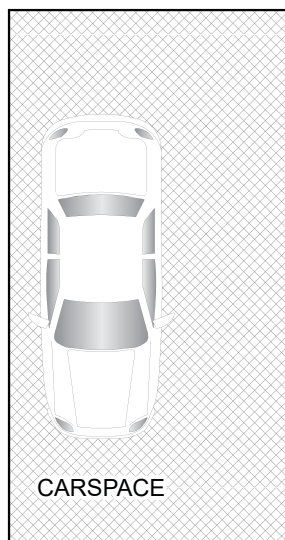
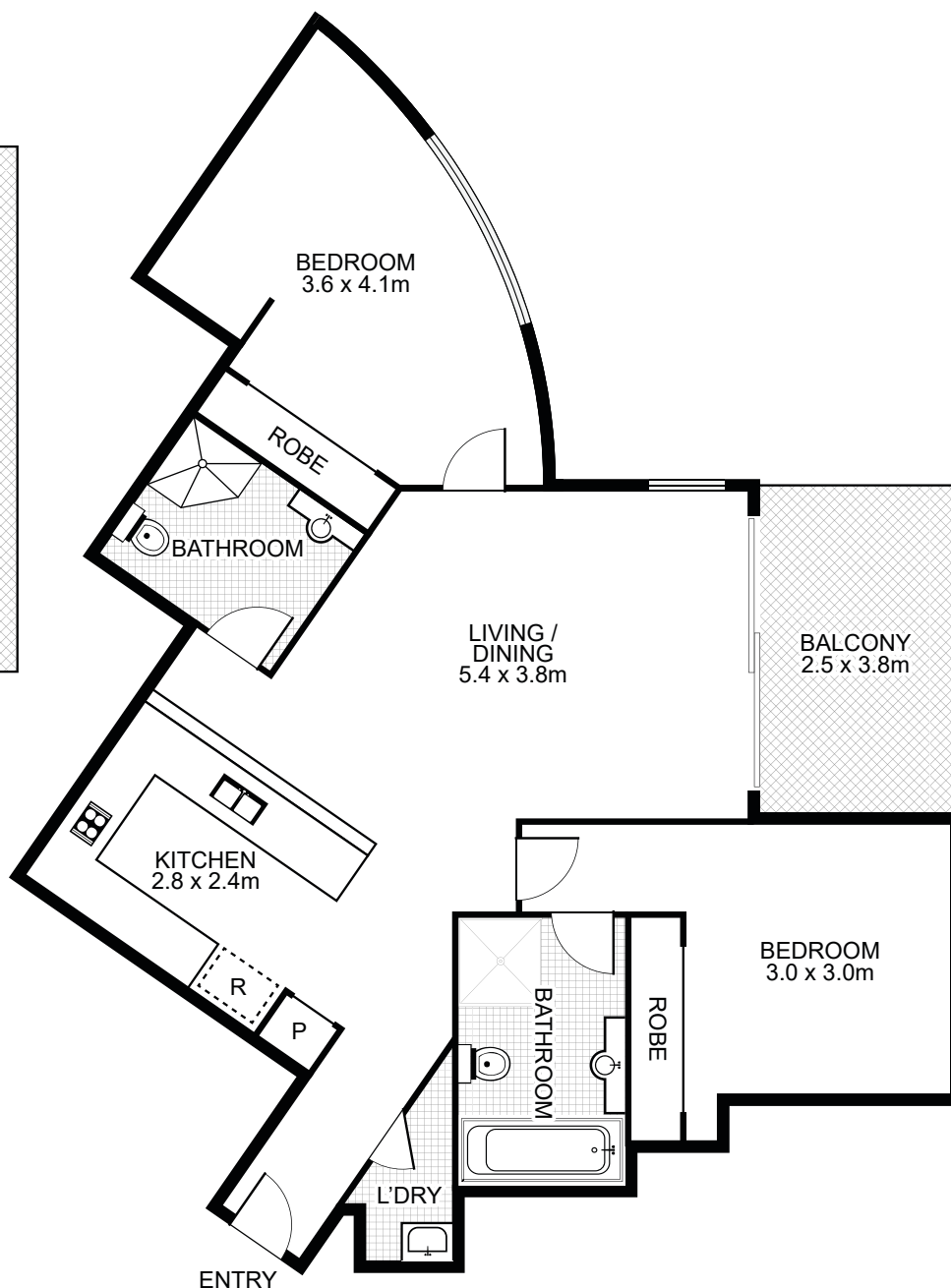


# 236/18 Lusty Street, Wolli Creek



NORTH



## Property Specifications:

Total Size: 102m<sup>2</sup>  
 Internal: 86m<sup>2</sup>  
 Car space: 16m<sup>2</sup>

## Levies are approximately per quarter:

Strata: \$1,571.60  
 Council: \$355  
 Water: \$150

## Strata Manager:

Whelan Property  
 Ph: 02 9219 4111  
 Strata Plan: 69506

"18 Lusty St, Wolli Creek" was registered in 2002